

When talking about the Wedge Block, here are some guidelines to help determine if it is a foul

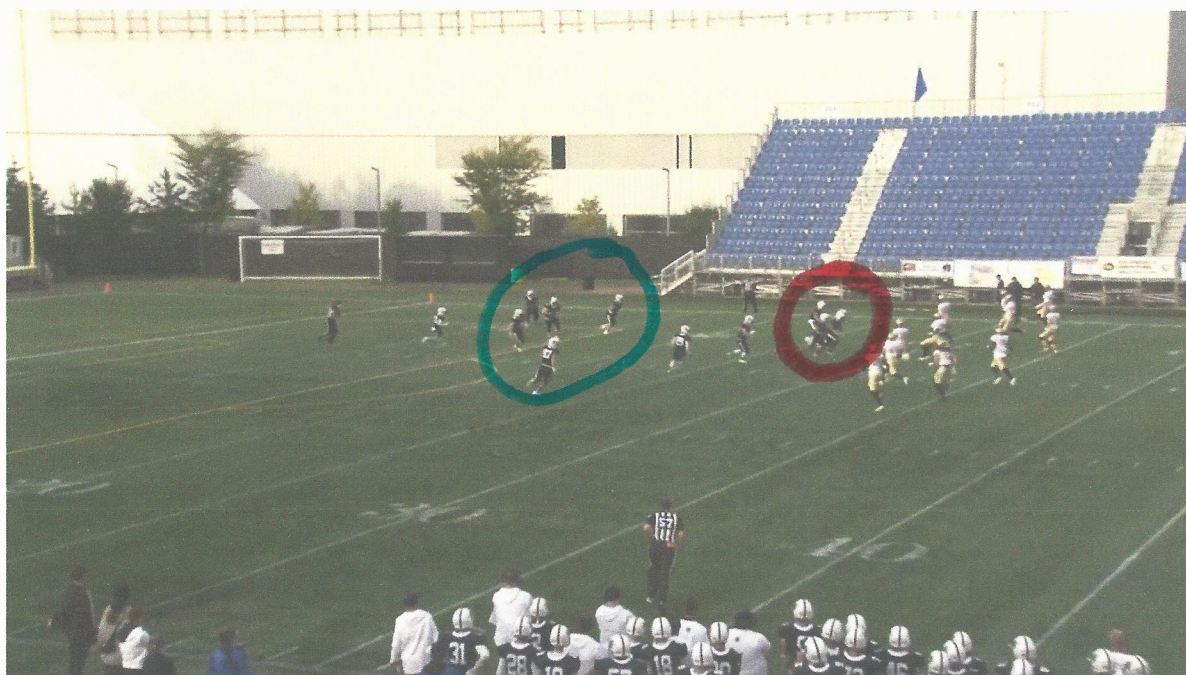
Hint 1 The return team is lined up 15 yards away from the KO line. Could they be setting up something?

Hint 2, stop the video when the counter is at 8



Look where the return team has retreated to, the 35 yard line, all 12 players are behind the 35.

Next, Stop the video when the counter is at 10



The block of 3 players (and a fourth) at the 35 yard line meets the standard for a wedge block. **(Red Circle)**

Line Judge at the 38 yard line has the best view.

The three players at the 15 yard lined are spaced enough that this group is legal. **(Blue Circle)**